



MK Together

Safeguarding Handbook

February 2024



Introduction

Strong partnerships are at the heart of the way we do things in Milton Keynes. We have long since realised that we will have greater impact on the lives of local people if we work closely together. Our strengthened partnership arrangements were introduced in 2019 to lead the multi-agency work in relation to safeguarding, community safety and health and wellbeing.

The MK Together partnership incorporates our statutory partnerships for

- Health and wellbeing through the Health and Care Partnership
- Community safety through the Community Safety Partnership, known as Safer MK
- Safeguarding for adults and children through the Safeguarding Partnership

This handbook details how our multi-agency safeguarding arrangements are incorporated in our MK Together Partnership arrangements.

The MK Together Partnership

Our partnership arrangements have been underpinned by the following principles:

- **Improves outcomes for residents** – our partnership working should have a direct impact on the lives of the people living in Milton Keynes.
- **Maximises value for the Milton Keynes pound** – streamlined partnerships which minimise duplication and help partners work together efficiently.
- **Flexible and agile** – partnerships which adapt as needed in order to keep up with the ever-changing world.
- **Facilitates system wide working** – a space for open and honest conversations, further enhancing relationships across the system.
- **Safeguarding as a golden thread** – it is front and central in everything we do.

Our partnership arrangements will:

- Have in place robust performance and quality monitoring measures regarding the implementation of agreed strategic priorities.
- Ensure that equality and diversity and safeguarding are incorporated in planning and service delivery.
- Be informed by innovation and sustainable best practice across the system which is then incorporated into commissioning plans.
- Have independent scrutiny at their core to provide assurance and hold a lens up to the system.
- Work with the support and advice of stakeholders and others, ensuring the views of local people are taken into account.
- Have suitable information sharing protocols in place signed by all responsible authorities.

Our safeguarding arrangements

The MK Together Safeguarding Partnership provides system-wide leadership for safeguarding. It seeks to assure itself that:

- Safeguarding practices in the city of Milton Keynes are compliant with legislative standards.
- The needs of local children and adults at risk of harm are met.
- Local services strive for continuous improvement.

Working groups

Five well embedded working groups act on behalf of the strategic boards to deliver partnership priorities in terms of both safeguarding and community safety. The working groups report directly into the Safeguarding Partnership for scrutiny and assessment of progress against the strategic milestones and management of risk to safeguard children and adults at risk of harm. The Safeguarding Partnership is the escalation route for risks, issues, or barriers to safeguarding identified by affiliated boards or other routes.

Each member of the working groups has delegated to make decisions, commit resources and challenge as appropriate for their organisation.

Assurance – Sponsored by the ICB, Chaired by MKTSP Independent Safeguarding Scrutineer

Assurance acts as the lens over the system to ensure our partnership is:

- Compliant with statutory requirements and carries out statutory requirements such as our Annual Safeguarding Report, Review of Restraint at Oakhill, Section 11 and Section 175 Audits.
- Oversees action plans of statutory safeguarding reviews and inspections.
- Identifies areas for development in whole system safeguarding.

Risk – Sponsored and Chaired by the Local Policing Area, TVP

Risk monitors new and emerging vulnerabilities in the population and gaps in provision for vulnerable groups. It provides strategic oversight of operational boards and monitors local need. These groups include:

- Contextual Safeguarding Board
- MARAC
- Channel Panel
- Integrated Offender Management
- Housing and Homelessness

Review – Sponsored and chaired by Milton Keynes University Hospital

This group is responsible for the management oversight of:

- Domestic Homicide Reviews
- Safeguarding Adult Reviews
- Local Child Safeguarding Practice Reviews

Wherever possible, review processes will engage children, families, and adults at risk of harm so we can learn from their experiences and improve practices.

Tasking – Sponsored and Chaired by Milton Keynes City Council

This is the project board for the partnership, delivering medium to long term projects that have been identified via a number of routes including:

- New national requirements including the implementation of the Serious Violence Duty, and the Combatting Drugs Strategy
- Learning from statutory and local learning reviews
- Hotspot data and community concerns for crime and disorder
- Strategic Needs Assessments and the views of people who live and work in Milton Keynes

Child Death – Sponsored and Chaired by Public Health

Child Death (known in other areas as Child Death Overview Panel) is responsible for ensuring our local child death pathway is embedded in local agencies and assesses modifiable themes in children who die to inform further work. This includes:

- Reviewing local pathways including the Joint Agency Response to ensure it meets the needs of the local population
- Reviews every death of a child who was resident in Milton Keynes to identify modifiable factors
- Complete an annual report detailing themes in child death, progress against last year's actions and make recommendations for future work to reduce preventable death in children.

Independent scrutiny arrangements

The whole partnership benefits from an independent safeguarding scrutineer who acts as a critical friend for decision-making across the system. The safeguarding scrutineer observes and challenges the work of the partnership, offering oversight of the effectiveness of our partnership arrangements. They will:

Observe key meetings and offer challenge and feedback where appropriate.	Audit activities (including Child Safeguarding Practice Rapid Reviews) and feedback on decision making.	Scrutinise annual reports and challenge any inaccuracies.
Chair the Assurance Board.	Receive highlight and end of project reports from task and finish groups and provide appropriate challenge.	Facilitate dispute resolution between partners.

The Independent Scrutineer will carry out at least one independent scrutiny exercise per year based on themes arising from Local Child Safeguarding Practice Review, Safeguarding Adult Reviews and Domestic Homicide Reviews. Learning is taken forward by the Safeguarding Partners.

Relevant Agencies:

The Safeguarding partners, (Local Authority, Integrated Care Board (ICB) and Police) are obliged under the [Working Together to Safeguard Children](#) statutory guidance to set out the relevant agencies that will support safeguarding duties in Milton Keynes and how they will work together. The relevant agencies are expected to:

Fully engage with the partnership.	Provide information which enables and assists the safeguarding partners to perform their duty to safeguard and promote the welfare of children in their area.	Contribute to the work of the partnership and task and finish groups as appropriate.
Have appropriate robust safeguarding policies and procedures in place specifically relevant to their organisation, providing evidence as required.	Ensure that their organisation works in accordance with inter-agency safeguarding procedures approved by the partnership.	

The relevant agencies in Milton Keynes are:

- Schools, Academies and MK College
- Oakhill Secure Training Centre
- HMP Woodhill
- Milton Keynes University Hospital NHS Foundation Trust
- Central and North West London NHS Foundation Trust (CNWL)
- National Probation Service
- MK Youth Justice and Support Service
- NHS England
- Parish councils
- Voluntary, community and social enterprise sector organisations operating in MK
- Children’s homes/fostering agencies

Agencies that are not named above are also expected to cooperate and collaborate with the safeguarding partners.

The partnership will continue to carry out the annual review of restraint at Oakhill Secure Training Centre and will oversee any action plans resulting from this review as well as Ofsted inspections and incident learning reviews. Oakhill STC and private children’s homes are named as relevant agencies for our safeguarding partners and will be included in any stakeholder participation, engagement and performance assessment.

Training and workforce

Training and workforce issues are overseen by the MK Together Safeguarding Partnership. There is a standing item on the Safeguarding Partnership agenda, providing all members of

the partnership, and chairs of the affiliated boards, with the opportunity to highlight any areas where commissioning multi-agency training might need to be considered.

Levels of need

Our levels of need document is published on the MK Together Partnership [website](#).

Arrangements for commissioning and publishing reviews

A panel of safeguarding partners (Case Review Panel) is responsible for overseeing the statutory case review and learning responsibilities of the Partnership. The Panel oversees the rapid review process for both children's and adults' referrals and makes a recommendation to the Safeguarding Scrutineer for the type of review to be carried out.

The Safeguarding Scrutineer has delegated responsibility for agreeing the recommendation to the National Child Safeguarding Practice Review Panel (children) or whether to undertake any review activity.

Membership of the Case Review Panel is:

- Milton Keynes City Council – Director of Children's Services and/or Director of Adults Services as appropriate
- Bedfordshire, Luton & Milton Keynes ICB – Chief Nurse or designated safeguarding leads for children and adults.
- Thames Valley Police – Local Borough Commander (deputised to Detective Chief Inspector)

Once agreement is reached regarding the level of review, commissioning and publishing of review activity is led by Review Board, supported by the MK Together team. Completed reports are reviewed by the MK Together Safeguarding Partnership.

Safeguarding annual report

An annual report will be agreed by the Safeguarding Partnership. This will set out progress made against the delivery of safeguarding priorities, and detail how the system has assured itself that children and adults at risk of harm are appropriately safeguarded against abuse and neglect. It will detail how the partnership has been able to assure itself that relevant agencies work together to discharge their safeguarding responsibilities effectively. This report will be publicly available.

Disputes and whistleblowing

Any dispute should ideally be resolved by the safeguarding partners. Where a majority view cannot be reached, the safeguarding scrutineer will be called upon to facilitate a resolution.

Any employee wishing to raise a concern should in the first instance refer to the whistleblowing policy for their own organisation. Government guidance is also available at: <https://www.gov.uk/whistleblowing>

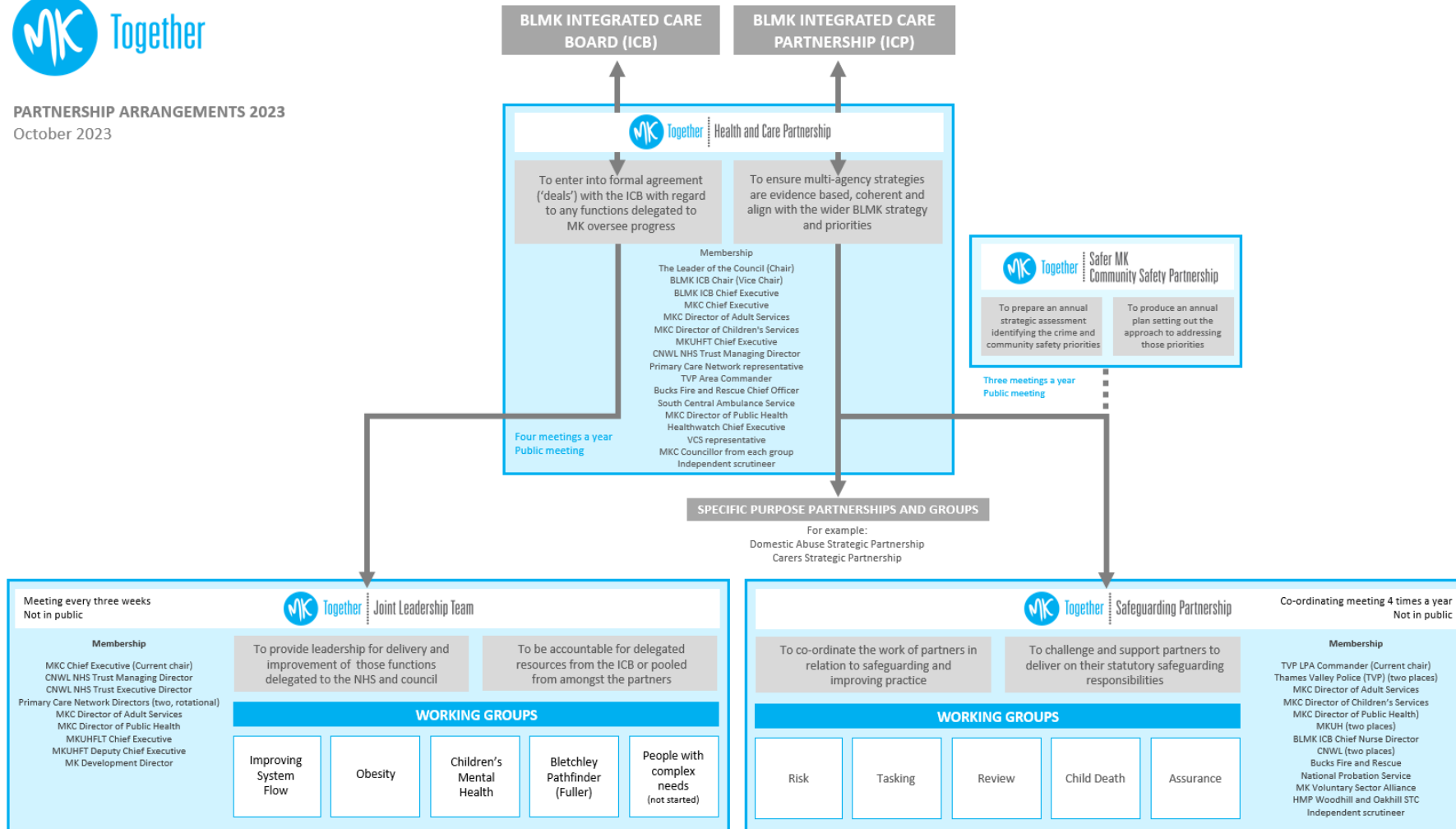
Funding

Partnership support arrangements and activities will be funded by contributions by partner agencies. MK Together Team Contributions will be agreed by the MK Together Safeguarding Partnership and published in an annual report. The budget will be managed on behalf of the partnership by the MK Together Team.

Appendix one – MK Together partnership diagram



PARTNERSHIP ARRANGEMENTS 2023
October 2023



Appendix two – Terms of reference for strategic boards



MK Together is the over-arching brand we use on our partnership work in the area of health, care and community safety.

Safeguarding Partnership

Terms of reference

Frequency of meeting: Four times annually (April, July, October, January)

The Safeguarding Partnership brings together senior leaders from key agencies in Milton Keynes to lead the delivery of strategic priorities and incorporates our multi-agency safeguarding arrangements as set out in Working Together 2018 and the Care Act 2014. The partnership is accountable to the Health and Care Partnership and, to a lesser extent to the Community Safety Partnership but it is an operational decision-making body in its own right.

The key functions of the Safeguarding Partnership are:

1. To co-ordinate the work of partners in relation to safeguarding and improving practice.
2. To challenge and support partners to deliver on their statutory safeguarding responsibilities.

In order to do this the partnership will:

- Agree strategic priorities for the safeguarding of children and adults and reporting on progress annually.
- Develop shared policies, processes and response to identified issues, making best use of the total resources available.
- Co-ordinate the work of the five working groups, delegating effectively and providing active support and sponsorship.
- Commission any reviews including Child Safeguarding Practice Reviews, Safeguarding Adult Reviews and Domestic Homicide Reviews.
- Commission any multi-agency training and co-ordinating a response to any workforce issues.

The core membership of the board will be made up of chief officer or senior level representation from the following agencies and will include lead representatives for local safeguarding partners:

- Milton Keynes City Council (five places to include the Director of Adult Services, Director of Children's Services and Director of Public Health)
- BLMK Integrated Care Board (ICB) (two places)
- Thames Valley Police (two places)
- Milton Keynes University Hospital Foundation Trust (two places)
- Central & Northwest London NHS Foundation Trust (CNWL) (two places)
- Buckinghamshire and Milton Keynes Fire and Rescue
- National Probation Service
- MK Voluntary Sector Alliance
- HMP Woodhill
- Oakhill Secure Training Centre (STC)

The independent safeguarding scrutineer will be in attendance. Other representatives may be invited to join the Board in an advisory or expert capacity by the Chair.

Agencies should ensure regular and consistent attendance. For the meeting to be considered quorate, one representative of each of the following organisations must be present: Milton Keynes City Council, BLMK Integrated Care Board (ICB), Thames Valley Police, Milton Keynes University Hospital Foundation Trust, and CNWL.

Meetings will usually be held virtually, with at least one in person meeting a year.



MK Together is the over-arching brand we use on our partnership work in the area of health, care and community safety.

Community Safety Partnership

Terms of reference

Frequency of meeting: Three times annually (July, November, and March)

It is a requirement of the Crime and Disorder Act 1998 to have a Community Safety Partnership. The aim of the partnership is to reduce crime, and the fear of crime and make Milton Keynes a safer place. It is constituted as a committee of Milton Keynes City Council as a Partnership Board.

The key functions of the Community Safety Partnership are:

1. To prepare an annual community safety assessment, informed by the voice of people who live and work in Milton Keynes, identifying the crime and community safety priorities.
2. To produce an annual plan setting out the approach to addressing those priorities.

In order to do this the partnership will:

- Consider any safeguarding issues raised by the Safeguarding Partnership, a multi-agency group which exists to co-ordinate the work of partners in relation to safeguarding, challenging and supporting partners to deliver on their statutory safeguarding responsibilities.

The Milton Keynes Council Cabinet member with responsibility for Community Safety will be appointed Chair, with the Vice-Chair being the Police Area Commander for Milton Keynes.

The core membership of the board will be made up as follows (representatives of the Responsible Authorities denoted with *):

- MKCC Cabinet Member (Chair)
- TVP Area Commander (Vice Chair)*
- MKCC Chief Executive or nominated representative *
- BLMK Integrated Care Board (ICB) nominated representative*
- Buckinghamshire and Milton Keynes Fire and Rescue nominated representative *
- National Probation Service nominated representative *
- Representative of the Police and Crime Commissioner
- MKCC Director of Children's Services or nominated representative

- MKCC Director of Public Health or nominated representative
- VCS representative
- Urban and rural parish councillor
- Business representative
- MKCC Councillor from each group

The independent safeguarding scrutineer will be in attendance. Other representatives may be invited to join the Board in an advisory or expert capacity by the Chair. Membership will be reviewed regularly to ensure that the partnership has the requisite skills.

The representatives of the responsible authorities are voting members of the Community Safety Partnership. If a voting member is unable to attend a meeting, he or she should appoint a deputy to act as a substitute. Any nominated deputies or substitutes for voting members must be of an appropriate seniority and be adequately briefed.

A quorum of a minimum of four representatives of the Responsible Authorities, except in financial matters when an affirmative vote of all five Responsible Authorities will be required.

Meetings will be held in public except where exempt or confidential information is likely to be disclosed, and the meeting or part of the meeting is held in private. The public will be able to watch the meetings live on-line via YouTube. As usual, questions from the public should be submitted in advance of the meeting.

Meetings are conducted in accordance with procedural rules applicable to council committees, except where modified by these terms of reference. Voting members are expected to attend in person where possible.

The usual cycle for agenda items for the meetings will be as follows:

July	Consider a progress report against the annual community safety plan Youth Offending Team annual report Consider any domestic homicide reviews that need to be reported
November	Consider a progress report against the annual community safety plan Consider the latest community safety assessment for next year's plan Consider any domestic homicide reviews that need to be reported
March	Agree the annual community safety plan for the coming financial year Consider any domestic homicide reviews that need to be reported

Sub Committees and working groups

The partnership will establish any standing sub committees or working groups as appropriate.



MK Together is the over-arching brand we use on our partnership work in the area of health, care and community safety.

Health and Care Partnership

Terms of reference

Frequency of meetings: Four times annually (usually, June, September, December and March)

Health and wellbeing boards are a component of the Health and Social Care Act 2012 and are statutory bodies. The Health and Care Partnership fulfils the requirement to have a board. It is constituted as a committee of Milton Keynes City Council as a Partnership Board.

The main functions of the partnership are:

1. To ensure local multi-agency health and care strategies are evidence based, preventative, coherent and that our local health and care system is working together effectively.
2. To enter into formal agreement with the BLMK Integrated Care Board (ICB) with regard to any functions delegated to Milton Keynes and to oversee and drive progress. 3.

In order to do this the partnership will:

- Provide system wide strategic leadership and oversight for improving the health and wellbeing of the people of Milton Keynes.
- Consider any public health issues raised by the Director of Public Health not being addressed elsewhere that require the attention of the partners.
- Consider any safeguarding issues raised by the Safeguarding Partnership, a multiagency group which exists to co-ordinate the work of partners in relation to safeguarding, challenging and supporting partners to deliver on their statutory safeguarding responsibilities.
- Keep the BLMK Integrated Care Partnership (ICP) strategic priorities (start well, live well, age well, growth and reducing inequalities) under review, ensuring local action is addressing these.
- Keep the strengths and needs of the local population under review, identifying any areas where more action is required, and where appropriate feeding this into the BLMK Integrated Care Partnership (ICP).

The core membership of the board will be made up of:

- The Leader of the Council (Chair)
- BLMK ICB Chair (Vice Chair)
- BLMK ICB Chief Executive or representative
- MKCC Chief Executive
- MKCC Director of Adult Services
- MKCC Director of Children's Services
- MKCC Director of Public Health
- MKUHFT Chief Executive or representative
- Central and North West London NHS Trust (CNWL) Chief Executive or representative
- GP representative
- TVP Area Commander
- Bucks Fire and Rescue representative
- South Central Ambulance Service NHS Foundation Trust representative
- Healthwatch representative
- VCS representative (with links to the local Voluntary Sector Alliance)
- MKCC Councillor from each group to include the Portfolio Holder for Adult Services, the Leader of the main opposition group and a representative from the minority opposition party

No elected councillor may serve on the partnership and hold a position of Chair of a Milton Keynes City Council scrutiny committee.

The independent safeguarding scrutineer will be in attendance. Other representatives may be invited to join the partnership in an advisory or expert capacity by the Chair.

Meetings will be held in public except where exempt or confidential information is likely to be disclosed, and the meeting or part of the meeting is held in private. The public will usually be able to watch the meetings live on-line via YouTube. As usual, questions from the public should be submitted in advance of the meeting.

Meetings are conducted in accordance with procedural rules applicable to council committees, except where modified by these terms of reference.

Core members are expected to attend in person where possible. Core members (other than councillors) are required to nominate deputies. Councillors, intending to nominate a substitute to attend on their behalf should notify Milton Keynes City Council Democratic Services in writing (which can be by email) before the start time for the meeting.

The quorum for the Board will consist of six members, of whom no more than half will be Councillors. Only core members will have the right to vote. In line with the national regulations on formal local government committee meetings, members not physically present in the room will not be able to have their vote recorded.

Appendix three – Working Group Terms of Reference



Independently chaired by
Safeguarding Scrutineer

Assurance

Purpose

To monitor performance in priority areas and organise thematic reviews, audits and data reviews. It is responsible for oversight of statutory safeguarding assurance duties and actions from statutory reviews including Domestic Homicide Reviews (DHRs), Local Child Safeguarding Practice Reviews (LSCPRs) and Safeguarding Adult Reviews (SARs). It will do this by:

- Co-ordinating assurance activities and system wide performance monitoring for progress against priorities and statutory obligations.
- Analysing partnership data to recognise good or improved practice for sharing across the partnership and escalate risks to the appropriate board.
- Facilitating peer led single and multi-agency audits, deep dives and thematic reviews to ensure good practice across the system.
- Carrying out the annual review of restraint at Oakhill STC.
- Overseeing the development and publication of an annual safeguarding report.
- Monitoring action plans from review activity and ensuring learning from reviews is implemented.

Membership

Chair: Safeguarding Scrutineer

- Milton Keynes City Council (MKCC)
- Thames Valley Police (TVP)
- BLMK Integrated Care Board (ICB)
- Secondary Designated Safeguarding Lead (DSL)
- Primary Designated Safeguarding Lead (DSL)
- Central & Northwest London NHS Foundation Trust (CNWL)
- MK University Hospital Foundation Trust (MKUHFT)

For the meeting to be quorate, at least one representative from the Local Authority, ICB and TVP are required. Chair may invite members as necessary.

Reporting

- The Board is accountable to the MK Together Safeguarding Partnership and provides a regular update by highlight report.
- The Board receives strategic direction from the Safeguarding Partnership.
- The Sponsor will ensure the work of this Board is informed by work by other affiliated boards.
- The Sponsor will communicate with sponsors of other affiliated boards around the delivery of the work programme.

Meets at least 10 times annually
Meetings held virtually



Risk

Sponsor:
Thames Valley Police

Purpose

To identify and highlight new and emerging areas of risk. The Board has oversight of case-based panels and other networks or agencies identifying risks in their client group, including but not exclusively, Channel, Contextual Safeguarding Board, Female Genital Mutilation Panel (FGM) and Multi-Agency Risk Assessment Conference (MARAC).

It will do this by:

- Maintaining strategic oversight of ongoing and emerging risks and vulnerabilities.
- Providing escalation routes for concerning issues and developing strategic response and action.
- Highlighting single or multi-agency risks to the board for a more joined up approach.
- Having oversight of and input into multi-agency policies for at risk groups, taking national and local learning into account.
- Reviewing the Strategic Needs Assessments for any vulnerabilities and risks in order to renew any relevant strategy at Tasking Board meeting.

Membership

Chair: LPA Commander, Thames Valley Police

- Milton Keynes City Council (MKCC)
- Thames Valley Police (TVP)
- BLMK Integrated Care Board (ICB)
- Central North West London NHS Foundation Trust (CNWL) – Campbell Centre and MH Services
- MK University Hospital Foundation Trust (MKUHFT)
- MK Act – Domestic Abuse
- MK Addictions Recovery Community (ARC-MK)
- Probation Service
- MK Primary and Secondary DSL Forums

For the meeting to be quorate, at least one representative from the Local Authority, ICB and TVP are required. Chair may invite members as necessary.

Reporting

- The Board is accountable to the MK Together Safeguarding Partnership and provides a regular update by highlight report.
- Activity is also reported to SaferMK where necessary, following discussion at Safeguarding Partnership.
- The Board receives strategic direction from the Safeguarding Partnership.
- The Sponsor will ensure the work of this Board is informed by the work of other affiliated boards.
- The Sponsor will communicate with sponsors of other affiliated board around the delivery of the work programme.

Meets at least 6 times annually
Meetings held virtually



Review

Purpose

To manage local and statutory practice reviews, ensuring they are appropriately commissioned, meet quality expectations and clear actions are identified. This includes:

- Successfully completing statutory Child Safeguarding Practice Reviews (Working Together 2018), Safeguarding Adult Reviews (Care Act 2014) and Domestic Homicide Reviews (Domestic Violence, Crime and Victims Act 2004) within specified timescales.
- Ensuring learning is captured from incidents that do not meet the statutory threshold for a formal review but where opportunities for learning are present.
- Overseeing a robust referral system to ensure all opportunities for learning are recognised and acted upon.
- Monitoring the quality of reviews and reports and overseeing publication where appropriate.
- Developing SMART action plans from review recommendations.
- Developing learning bulletins which will be disseminated to the workforce via members of Review Board.

Membership

Chair: Head of Safeguarding, Milton Keynes University Hospital Foundation Trust

- Milton Keynes City Council (MKCC)
- Thames Valley Police (TVP)
- BLMK Integrated Care Board (ICB)
- Central & North West London NHS Foundation Trust (CNWL)
- MK University Hospital Foundation Trust (MKUHFT)

For the meeting to be quorate, at least one representative from the Local Authority, ICB and TVP are required. Chair may invite members as necessary.

Reporting

- The Board is accountable to the MK Together Safeguarding Partnership and provides a regular update by highlight report.
- Progress of Domestic Homicide Reviews is provided at SaferMK.
- The Board receives strategic direction from the Safeguarding Partnership.
- The Sponsor will communicate with sponsors of other affiliated boards around the delivery of the work programme.
- The Sponsor will consider rotation of chair after 12 - 18 months.

Financial Responsibility

The Review Board will deliver reviews on behalf of the Safeguarding Partnership and ensures that best value for money is achieved when procuring independent reviewers.

- The Review Board will escalate financial risks to the Safeguarding Partnership.
- The Review Board will escalate additional spend on individual reviews that is outside of the allocated budget.

**Meets at least 6 times annually
Meetings held virtually**



Tasking

Purpose

To develop and deliver multi-agency interventions in response to specific intelligence or issues, responding directly to requests from other affiliated boards. To oversee the implementation of new national Duties and local projects.

It will do this by:

- Ensuring a coordinated partnership approach to responding to local intelligence through multi-agency plans.
- Undertaking a range of community projects including awareness raising campaigns and joint disruption or enforcement operations.
- Establishing Task and Finish groups to deliver specific pieces of work on behalf of the partnership.
- Overseeing the delivery of the annual engagement exercise which will encompass the community safety survey, ensuring steps are taken to maximise response.
- Overseeing the implementation and embedding of the Serious Violence Duty and Combating Drugs Partnership.

Membership

The Tasking Board is made up of representative of the following agencies, who are empowered by their agency to make decisions:

Chair: Director of Customer and Community Services, Milton Keynes City Council

- Milton Keynes City Council (MKCC)
- Thames Valley Police (TVP)
- BLMK Integrated Care Board (ICB)
- Secondary Designated Safeguarding Lead (DSL)
- Primary Designated Safeguarding Lead (DSL)

For the meeting to be quorate, at least one representative from the Local Authority, ICB and TVP are required. Chair may invite members as necessary.

Reporting

- The Board is accountable to the MK Together Safeguarding Partnership and provides a regular update by highlight report.
- Activity is also reported to SaferMK as appropriate following discussion as Safeguarding Partnership.
- The Board receives strategic direction from the Safeguarding Partnership.
- The Sponsor will ensure the work of this Board is informed by the work of other affiliated boards.
- The Sponsor will communicate with sponsors of other affiliated boards around the delivery of the work programme.

Financial Responsibility

The Tasking Board has a 3 year allocation of £100k to bid against. It is not allocated a set amount but is likely to obtain what is required upon request.

Meets at least 6 times annually
Meetings held virtually



Sponsor:
Public Health

Child Death Board

Purpose

To review deaths of all children normally resident in the area, and, if appropriate and agreed between CDR partners, the deaths in the area of non-resident children¹, in order to learn lessons and share any findings for the prevention of future deaths.

It will do this by:

- Reviewing child deaths, excluding those babies who are stillborn and planned terminations of pregnancy carried out within the law.
- Determining whether there are modifiable factors which might, by means of a locally or nationally achievable intervention, be modified to reduce the risk of future child deaths.
- Analysing data in order to identify trends and making recommendations accordingly.
- Working with Bedford Borough, Central Bedfordshire & Luton CDOP on joint campaigns and pieces of work where appropriate.
- Oversee any changes implemented by the BLMK Unexpected Child Death Pathway

Membership

Chair: Director of Public Health, Milton Keynes City Council

- Thames Valley Police Detective Inspector
- Public Health representative
- Milton Keynes University Hospital NHS Foundation Trust Bereavement Midwife
- Milton Keynes City Council Children's Services Representative
- Designated Doctor Child Death
- Milton Keynes University Hospital
- Coroner's Service Manager Milton Keynes
- BLMK Integrated Care Board (ICB) Designated Nurse, MK Place Based

For the meeting to be quorate, at least one representative from the Local Authority, ICB and TVP are required. Chair may invite members as necessary.

Reporting

- The Board reports to the MK Together Safeguarding Partnership
- The Child Death Board will produce an annual report
- The MK CDB Annual Report will be presented to the MK Together Safeguarding Partnership and to the BLMK-ICB Performance Committee
- The Sponsor will communicate with sponsors of other affiliated boards around the delivery of the work programme.
- around the delivery of the work programme.

Meets four times annually / Meetings held virtually

Appendix four - Case Review process

A summary of the local process and timescales for serious incidents - adults, children and domestic homicides - that should be notified to the Case Review Panel via the MK Together team.

Incident: A person has died or been seriously harmed and the circumstances may meet the criteria for a Child Safeguarding Practice Review (CSPR), Safeguarding Adult Review (SAR) or Domestic Homicide Review (DHR)

